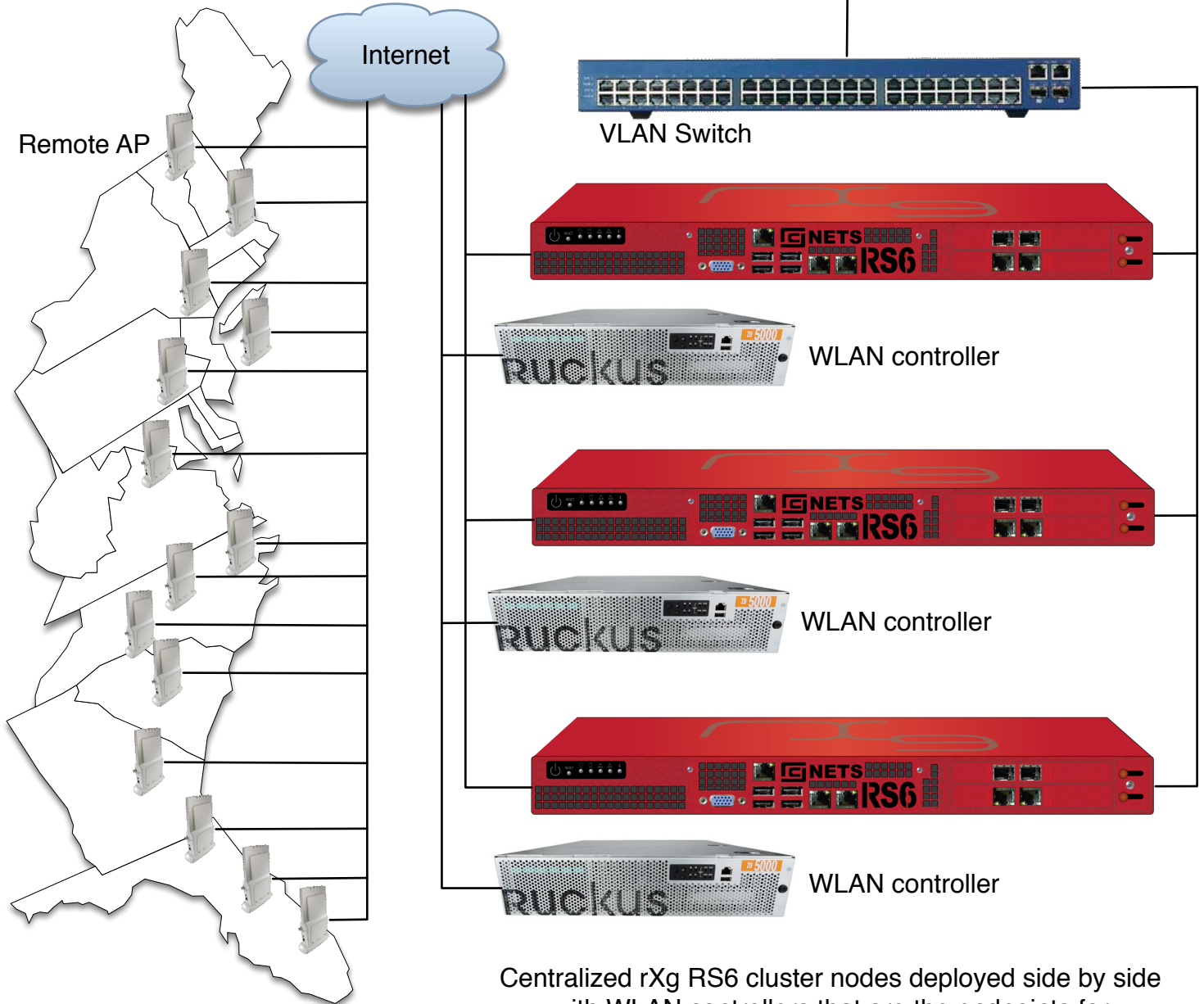




Geographically distributed Lightweight Access Points create tunnels over the Internet to WLAN controllers located in a central data center.



rXg cluster provides complete control, communication and cognizance over a large scale end-user population connected to numerous geographically distributed hotspots.

Centralized rXg RS6 cluster nodes deployed side by side with WLAN controllers that are the endpoints for tunnels originating from geographically distributed APs.